

SINCHOLD Welded Base Fixing

SINCHOLD 9116/08/37

Adjustable crane rail clip is designed to fix heavy rails in the most arduous applications. It can withstand a horizontal force from the rail of **55kN(5.6 tonnes)**. Its low profile allows it to be used with cranes that are fitted with guide rollers.

SPECIFICATIONS :

MAX SIDE LOAD 55kN

8 mm HORIZONTAL RAIL ADJUSTMENT

DIMENSIONS (mm):

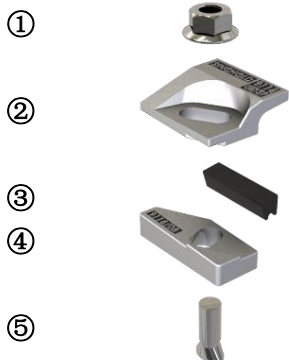
| REF NO. | X | Y FULL NUT | Z | WEIGHT kg |
|-------------------|-----------------------|---------------|----|--------------|
| 9116/08/37 | 37 | 38 | 24 | 0.73 |
| S (rubber) | RAIL WITH PAD PLAN | | | 14mm |
| H (rubber) | RAIL WITHOUT PAD PLAN | | | 21mm |



FEATURES

- The proven design has been used successfully for many years throughout the world.
- The clip is welded to the rail support. No access is required from below.
- The two main parts are locked together on tightening the grade 8.8 bolt.
- The clip has a self-tightening mechanism.
- A special vulcanized rubber block applies a controlled force to the rail.

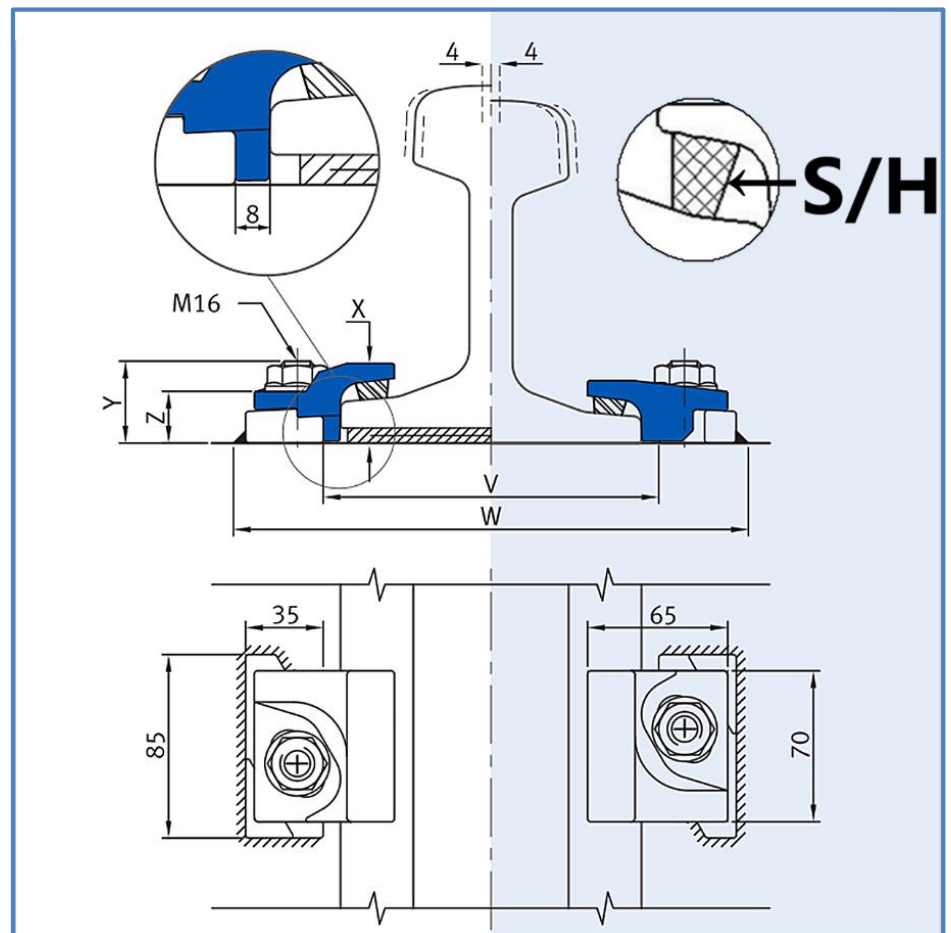
COMPONENTS



1. Flange nut
2. Forging steel clip
3. Vulcanized rubber block
4. Weldable base
5. M16 Captive bolt

1: RAIL WITH PAD

2: RAIL WITHOUT PAD

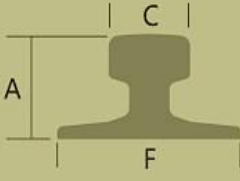


Minimum assembly width - $W = \text{Rail width (F)} + 100\text{mm}$

$V = \text{Rail width (F)} + 16\text{mm}$



SINCHOLD Welded Base Fixing

|  | F mm | C mm | A mm | RAIL WEIGHT (kg/m) | 1. CLIP REFERENCE FOR RAIL WITH PAD | 2. CLIP REFERENCE FOR RAIL WITHOUT PAD |
|---|---------|---------|---------|--------------------------|--|--|
| QU 70 | 120 | 70 | 120 | 52.8 | 9116/08/37 (S) | 9116/08/37 (H) |
| QU 80 | 130 | 80 | 130 | 63.69 | 9116/08/37 (S) | 9116/08/37 (H) |
| A 55 | 150 | 55 | 65 | 31.8 | 9116/08/37 (S) | 9116/08/37 (H) |
| A 65 | 175 | 65 | 75 | 43.1 | 9116/08/37 (S) | 9116/08/37 (H) |
| A 75 | 200 | 75 | 85 | 56.2 | 9116/08/37 (S) | 9116/08/37 (H) |
| A 100 | 200 | 100 | 95 | 74.3 | 9116/08/37 (S) | 9116/08/37 (H) |
| S 30 | 108 | 60 | 108 | 30.03 | 9116/08/37 (S) | 9116/08/37 (H) |
| S 33 | 105 | 58 | 134 | 33.47 | 9116/08/37 (S) | 9116/08/37 (H) |
| S 41 | 125 | 67 | 138 | 41.4 | 9116/08/37 (S) | 9116/08/37 (H) |
| S 49 | 125 | 67 | 149 | 49.43 | 9116/08/37 (S) | 9116/08/37 (H) |
| JIS 37 | 122 | 63 | 122 | 37.2 | 9116/08/37 (S) | 9116/08/37 (H) |
| ISCOR 48 | 127 | 68 | 150 | 47.6 | 9116/08/37 (S) | 9116/08/37 (H) |
| ISCOR 57 | 140 | 70 | 165 | 57.4 | 9116/08/37 (S) | 9116/08/37 (H) |
| ASCE 80 | 127 | 64 | 127 | 39.8 | 9116/08/37 (S) | 9116/08/37 (H) |
| ASCE 85 | 132 | 65 | 132 | 42.3 | 9116/08/37 (S) | 9116/08/37 (H) |
| 31 kg AS | 108 | 64 | 118 | 31.5 | 9116/08/37 (S) | 9116/08/37 (H) |
| 41 kg AS | 127 | 64 | 137 | 40.7 | 9116/08/37 (S) | 9116/08/37 (H) |
| 50 kg AS | 127 | 70 | 154 | 50.8 | 9116/08/37 (S) | 9116/08/37 (H) |
| UIC 54 | 140 | 70 | 159 | 54.4 | 9116/08/37 (S) | 9116/08/37 (H) |
| ISCR 60 | 105 | 60 | 105 | 40 | 9116/08/37 (S) | 9116/08/37 (H) |
| ISCR 80 | 130 | 82 | 130 | 64.4 | 9116/08/37 (S) | 9116/08/37 (H) |

This clip can be used for a wider selection of rails than illustrated. Please contact SINCHOLD for the full range of possible rails. All rails can be fastened with bolted or welded base clips. SINCHOLD may change or improve their products and also alter specifications without notice.

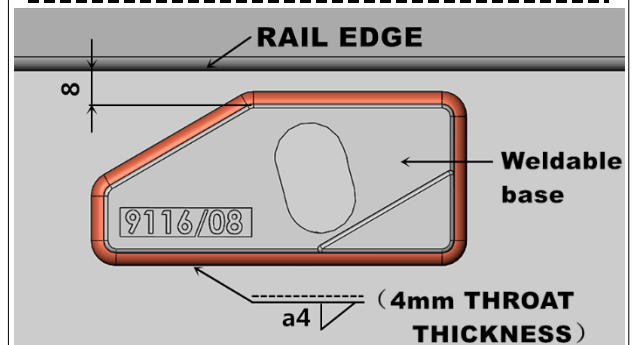
INSTALLATION INSTRUCTIONS:

Weld all round the clip base, except the side closest and parallel to the rail, with a 4mm throat thickness fillet weld, using low hydrogen electrodes. Recommended electrodes AWS E7018 or E7028. Clip base is made from weldable grade steel. If a continuous weld around the clip base is required, this is possible. Please consult SINCHOLD for guidance.

TIGHTENING TORQUE 125Nm

Please contact SINCHOLD, for full installation instructions.

WELD DETAIL:



SINCHOLD Port Engineering Co.,Ltd

Tel: 0086-510-83768896 Fax: 0086-510-83768826

E-mail: sales@sinchold.com

Add: No.82 Dongzhuang Industrial Park, Yanqiao Street, Huishan District, Wuxi City, Jiangsu Province, P.R.China

